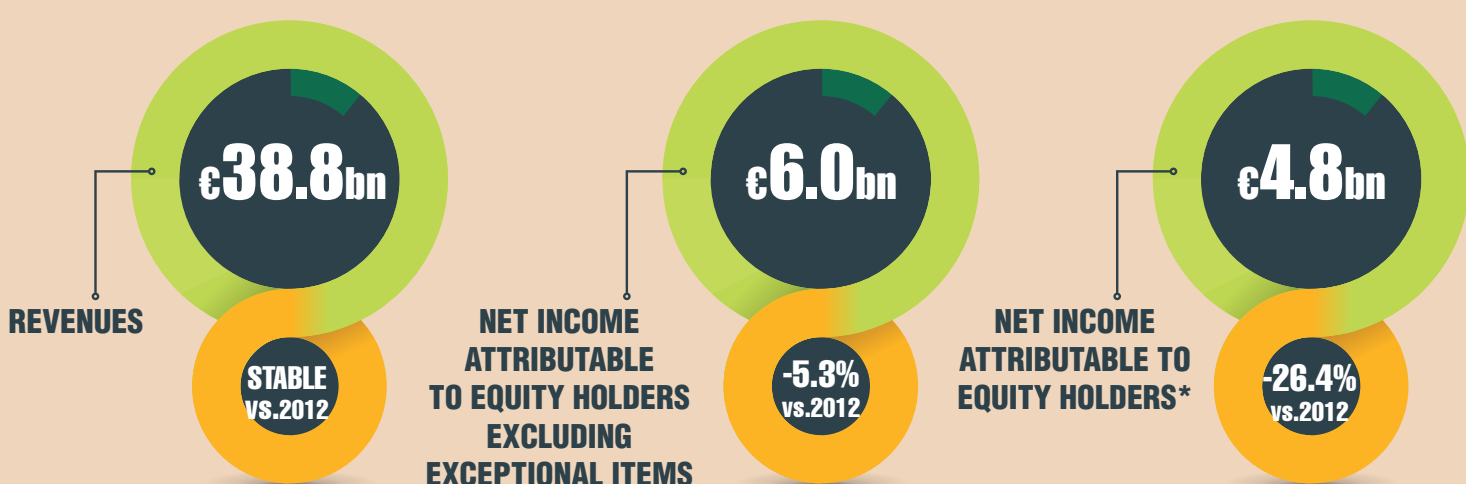


# BNP Paribas presents its 2013 results and 2014-2016 development plan



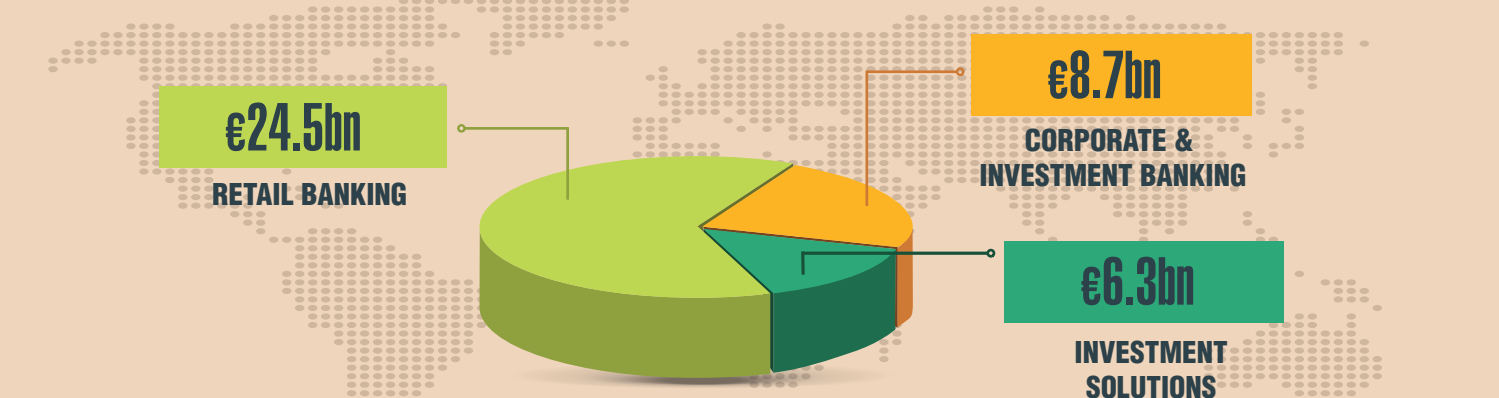
## 2013 Annual Results

### REVENUE RESILIENCE...



\* Including exceptional items: Simple & Efficient transformation costs and a provision for the US item

### ...THANKS TO THE DIVERSITY OF BUSINESS LINES AND GEOGRAPHIES



Corporate & Investment Banking covers corporates and institutional investors  
Investment Solutions: Insurance, Wealth Management, Real Estate, Investment Partners, Securities Services

2013 revenues for business lines

### A ROCK-SOLID BALANCE SHEET



\*\* Solvency ratio: fully-loaded Basel 3 CET 1

Audited financial statements as of 31/12/13

## 2014-2016 Development Plan

### SERVE OUR CLIENTS IN A CHANGING WORLD



### 4 TARGETS FOR 2016



\*\* Solvency ratio: fully-loaded Basel 3 CET 1  
\*\*\* ROE: Return On Equity

